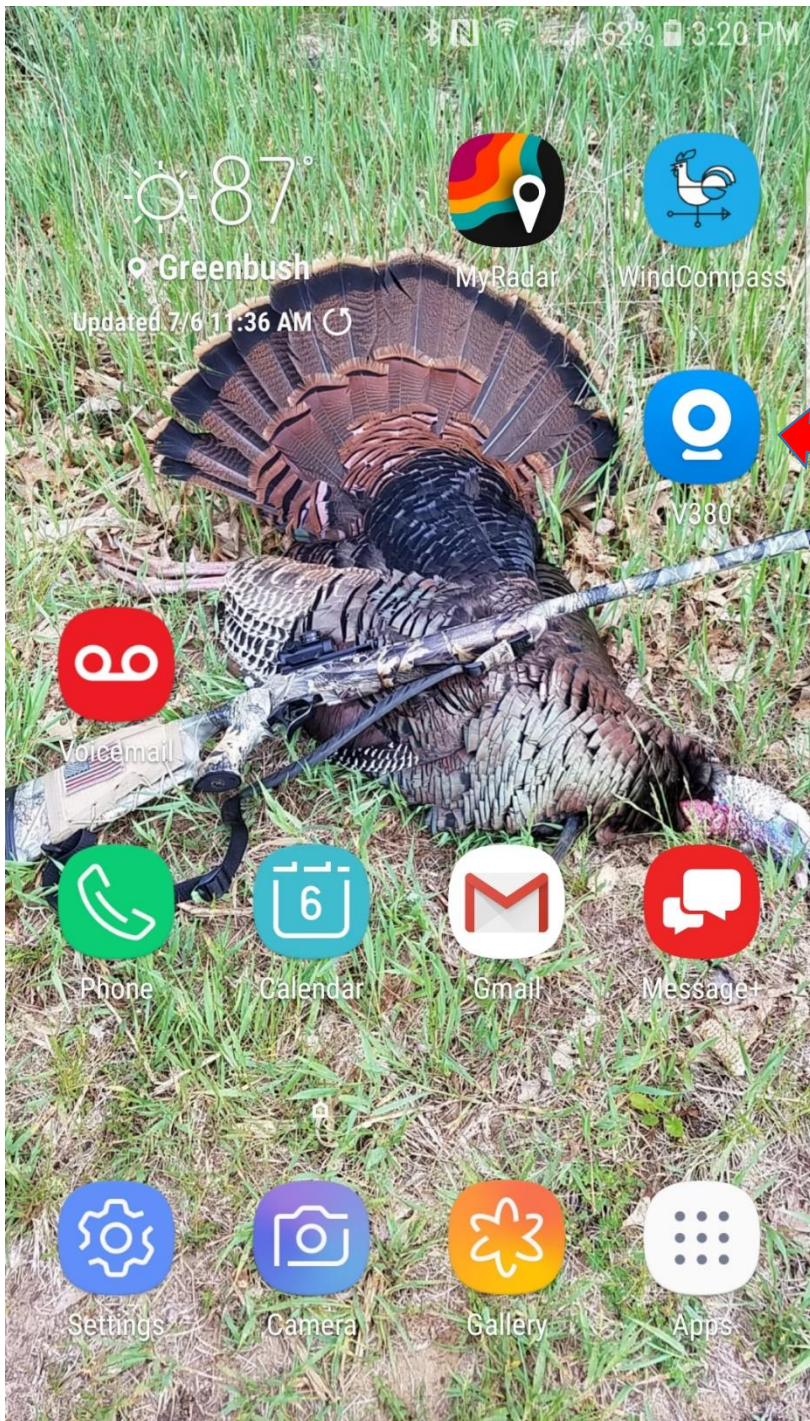


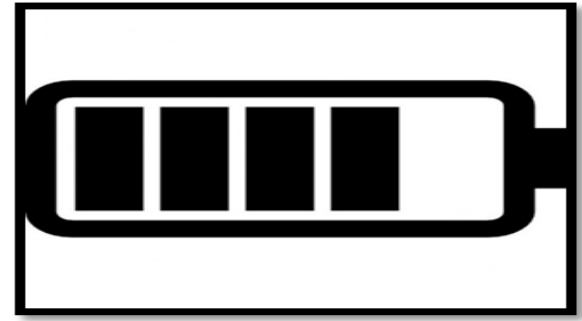
V380 App for BlindSPOT-360



General BlindSPOT-360 Info

Rechargeable Battery

- **Cameras charger;** Red light = needs charging, Green light = fully charged.
- **Battery life;** Think of it like your phone for charging and drainage. Most new phones have batteries with ~ 3,000mAh capacity. Your camera has 6,000mAh capacity providing you a solid day afield viewing.



In the Field Viewing

- No cell service needed.
- Our App allows you to use multiple BlindSPOT cameras. Each camera will have its own Wi-Fi Hot-Spot signal to connect to.
- Simply set the camera up to 50 yards away (line of sight) to View, Photo or Video will game literally hundreds of yards away.
- The Camera pans to view 360 degrees, plus tilts 120 degrees which you control live from your smartphone or tablet.

Each Camera comes with

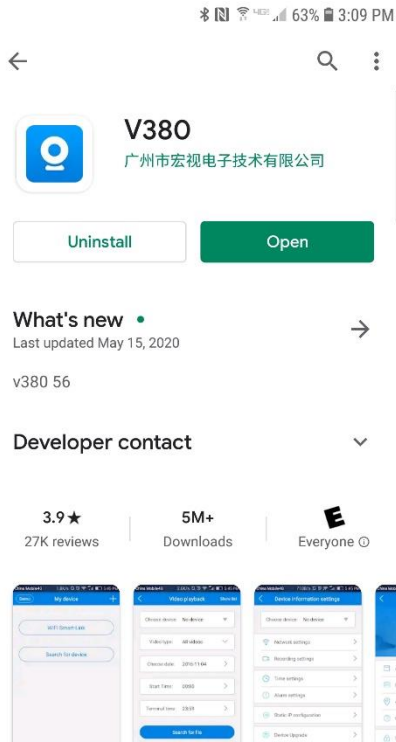
- Battery charging system.
- Twist-Loc mounting discs.
- Tripod, camera mounting system.
- Padded carry case.
- 2 Year Warranty.



Camera Buttons and Port

- A) On / Off switch.
- B) Charging Port.
- C) Firmware Reset button.

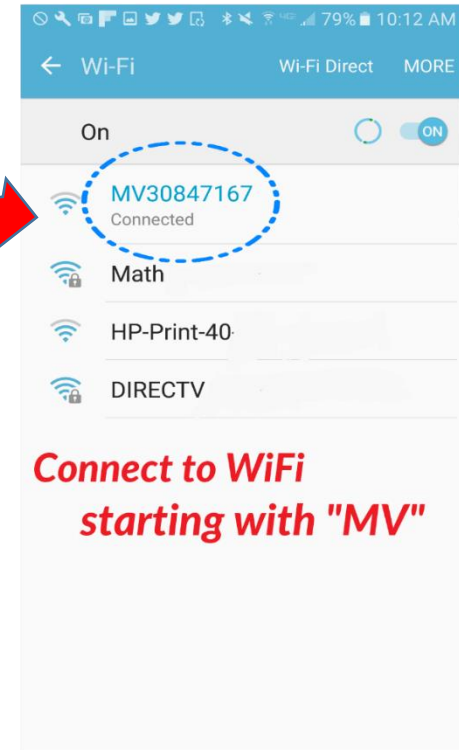
Download V380 App / Connect to it's Wi-Fi



Search and Download V380 App

1. Download V380 APP

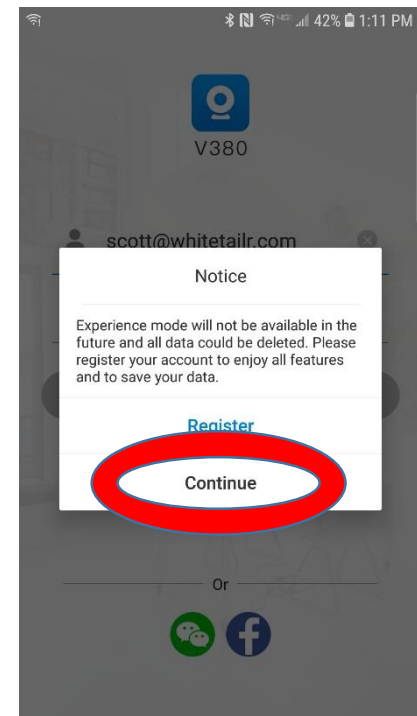
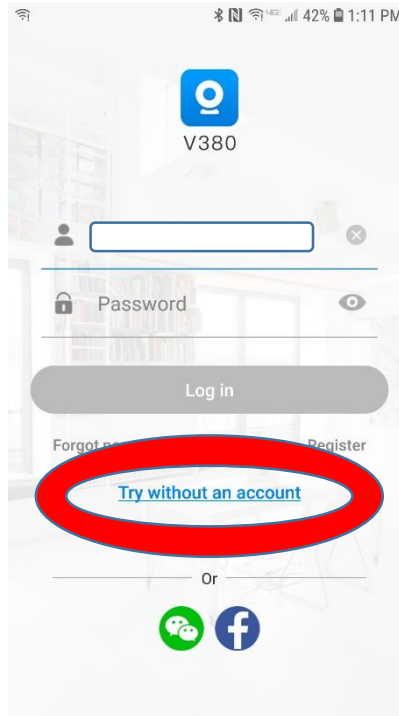
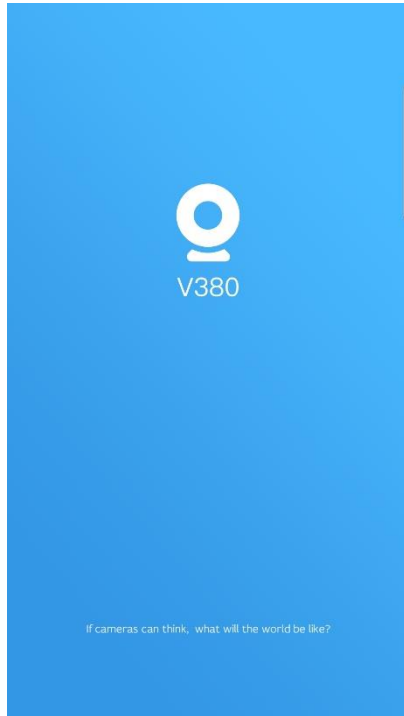
- A) Search "V380" in either the Apple or Android App Stores.
- B) Now download the App.



2. Connect Phone to Cams Wi-Fi Signal

- A) ~ 45 seconds after the camera has been turned on its Wi-Fi signal will be available.
- B) In Phone Settings/Wi-Fi, look for the signal starting with "MV" and connect to it.
- C) Once set, your phone will always recognize your camera's signal when your in the field.

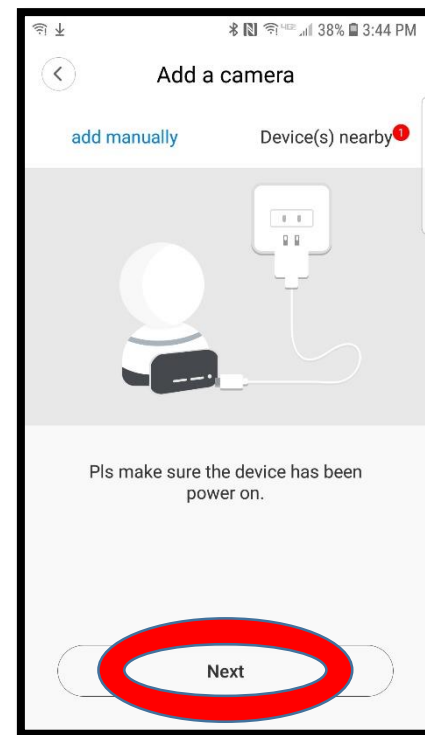
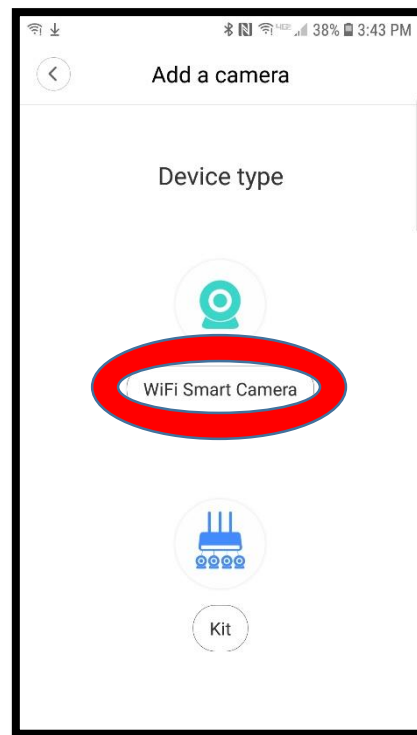
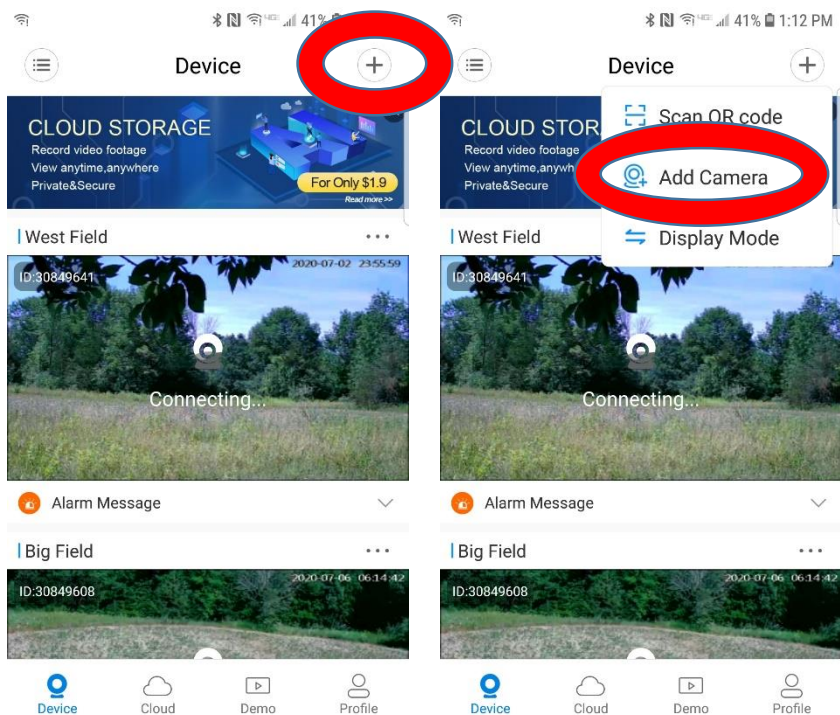
Open the V380 App



3. Open the V380 App

- A) Look for the V380 Camera icon and open the App.
- B) Open App using “Try without an account” then “Continue”

Add your BlindSPOT-360 Camera



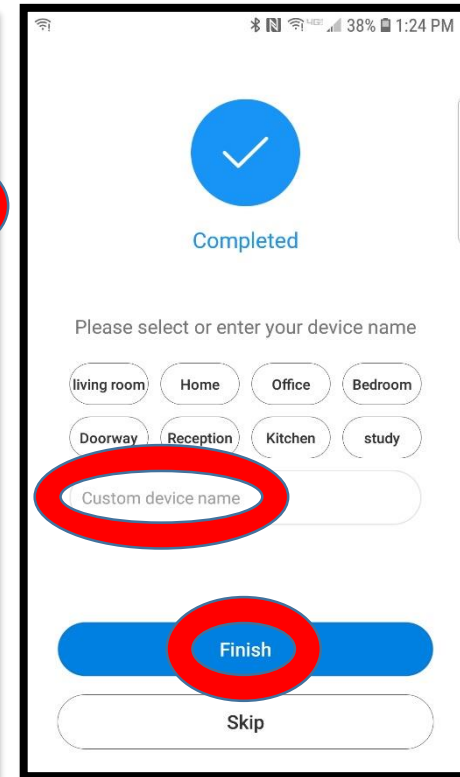
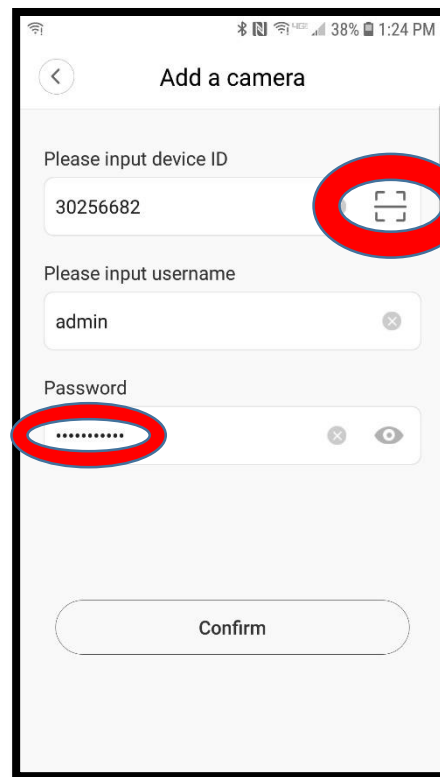
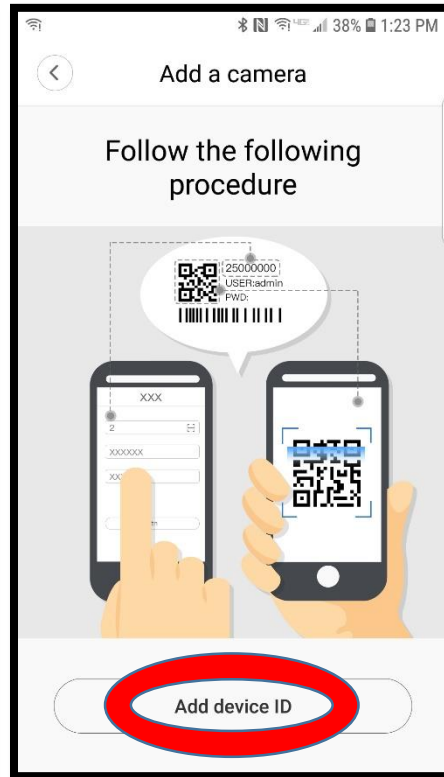
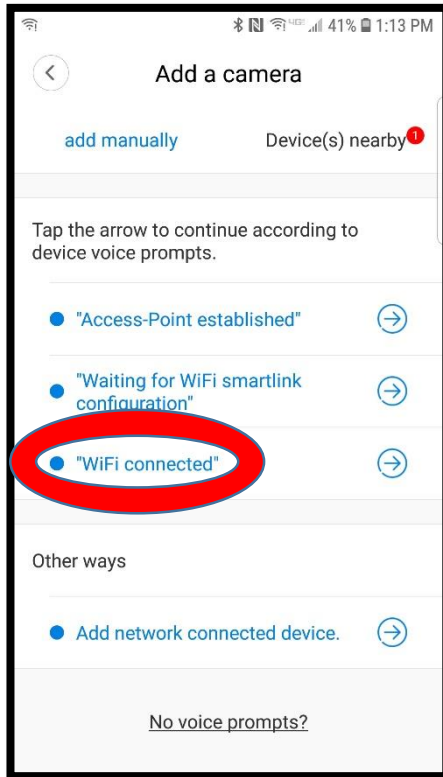
4. Add your first Camera

- A) Hit the “+” symbol in the upper right corner.
- B) Next, Add camera.

5. Adding Camera Steps

- A) Select “WiFi Smart Camera”
- B) Hit “Next” to continue

Add your BlindSPOT-360 Camera



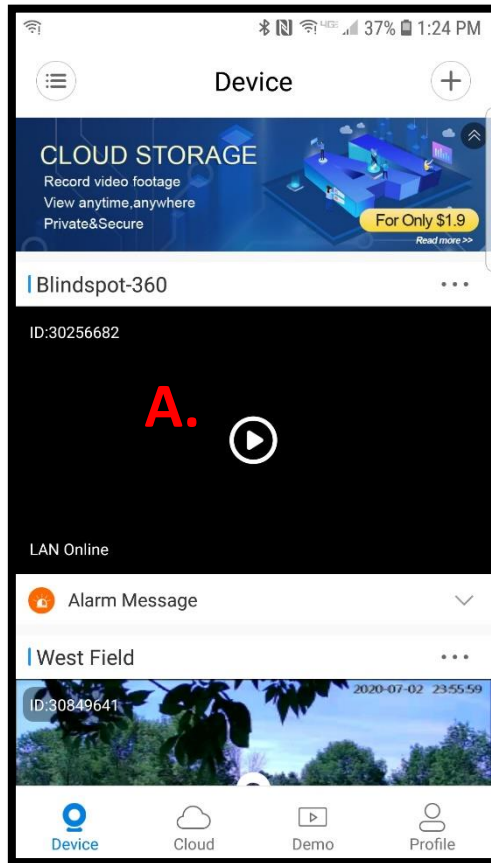
6. Adding Camera continued.

- A) Select "WiFi connected"
- B) Next, hit "Add device ID"

7. Scan in QR code to Finish

- A) Hit the scan icon and scan the QR code on the bottom of camera to load its ID. Now enter a password.
- B) Name your camera option

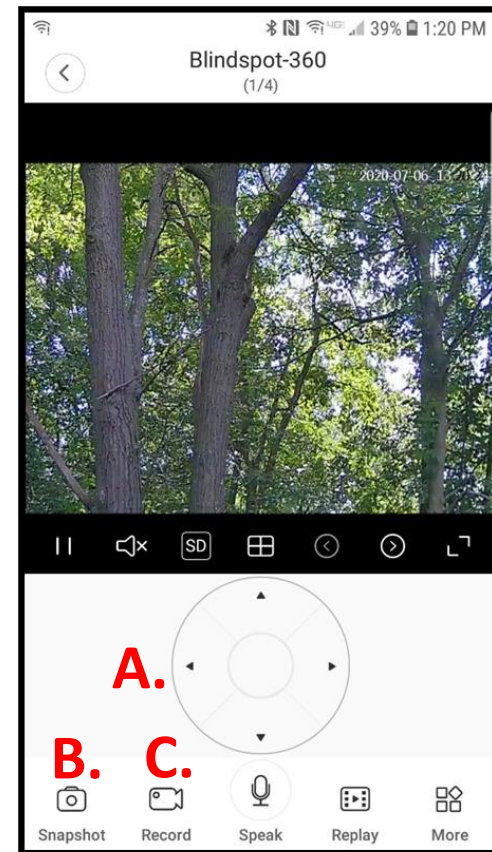
Key App Control Buttons



8. Play Button

- A. Hit **“Play”** button to start viewing.

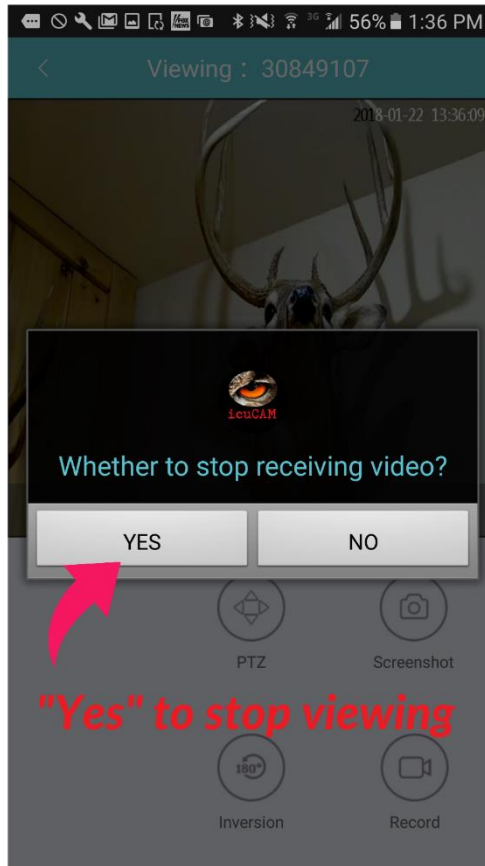
Note; your phone will save picture and video files taken in your phones Gallery under a new album once your phone refreshes.



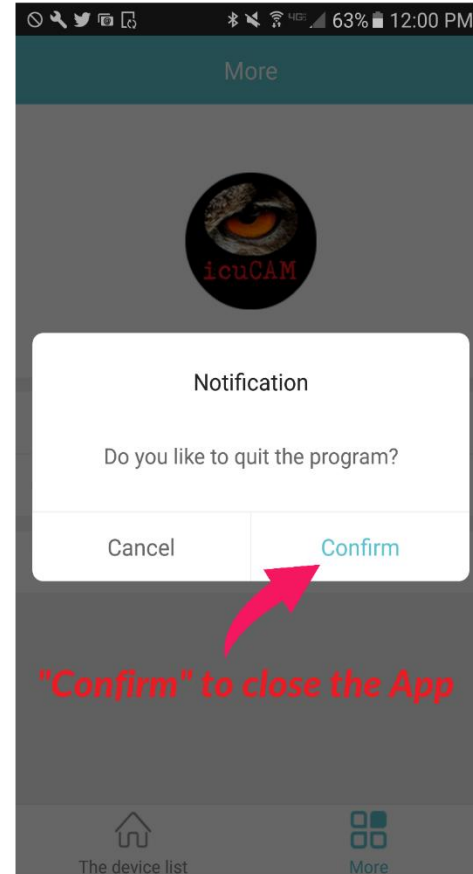
9. Camera Controls

- A. “PTZ” where you control the panning (up/down, left/right).
- B. “Screenshot” takes pictures.
- C. “Record” starts and stops video recordings.
- D. No speaker ability

Camera / App Sign Out Permissions



"Yes" to stop viewing



"Confirm" to close the App

7. Stop viewing and signing out of the App

- A) Hit "Yes" to shut down the cameras live streaming.
- B) When you are exiting the App, press "Confirm" to sign-out.

- **Tips:**

- When using multiple cameras in the field remember to switch to the next camera's Wi-Fi signal first prior to viewing.
- Find a simple "Wi-Fi settings" App to use as a shortcut for easy switching of Wi-Fi's.
- Finding your camera after dark; look for small red glowing light we put in the camera's power head or point the camera towards you and track your own approach.
- When trimming small trees around your game trails cut them off 2 to 3 feet high and use them as camera pedestal's.
- Start out each day afield with your phone and camera fully charged.
- Your BlindSPOT camera can also be charged using a portable smartphone power bank.

It's a LiveCAM™ so get creative..!



Plymouth, WI

www.WhitetailR.com